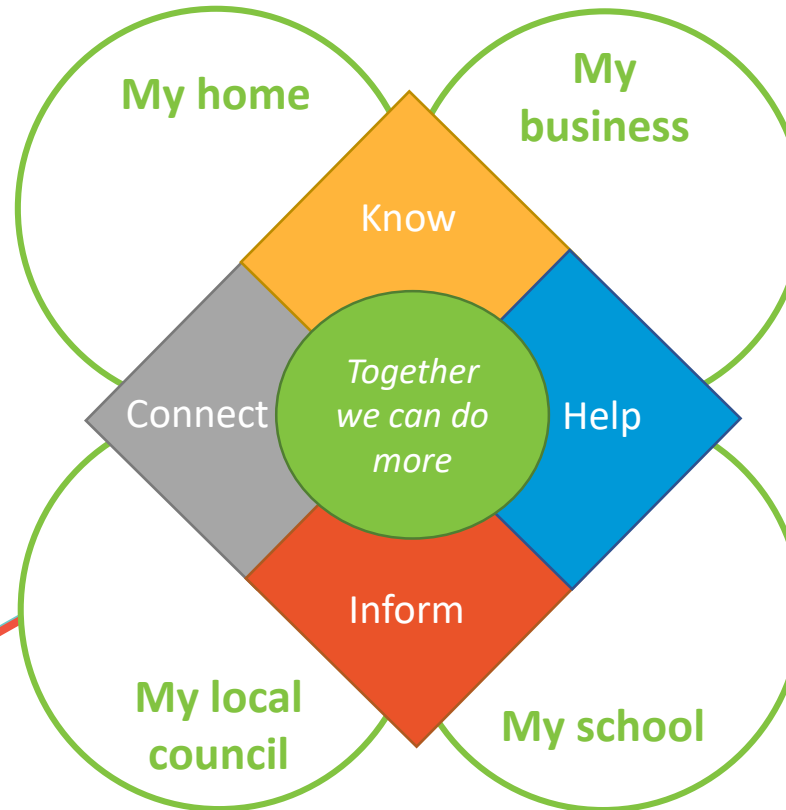




Sustainability Victoria

Mobilising Victorians to create a better environment for our future

Acting on
climate
change



Using resources
wisely



TAKE2

Victoria's climate change pledge

Climate change



ResourceSmart Schools



Boosting business productivity



Home upgrades



Community power hubs



Commercial built environment



Waste education



Social impact investment



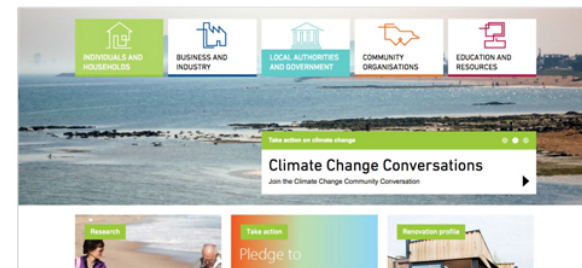
Organics collections



Resource Recovery Infrastructure



Household chemicals collections



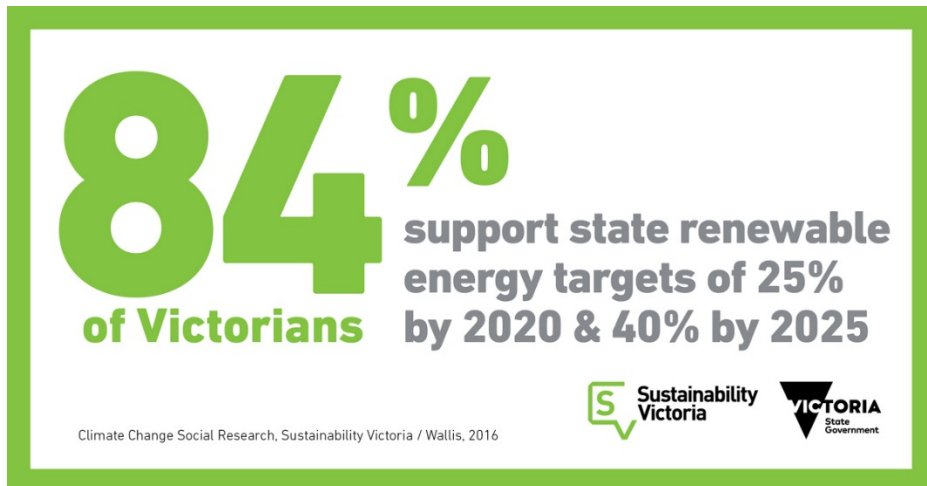
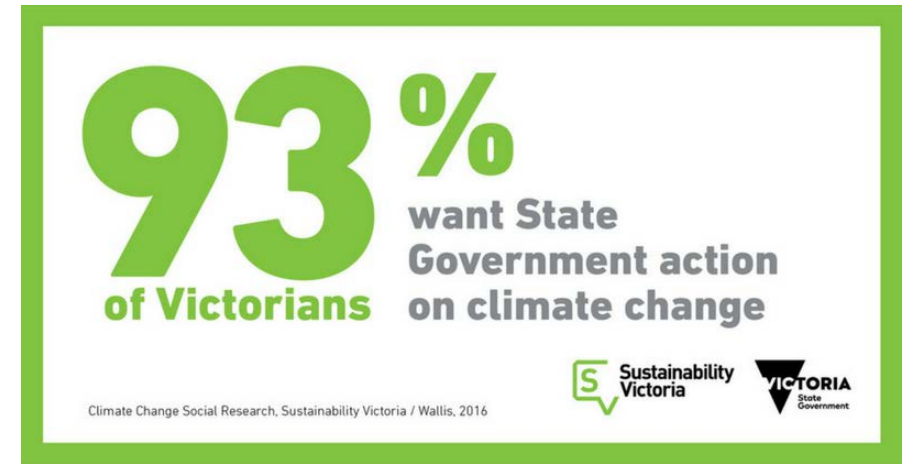
Information / guidance

sustainability.vic.gov.au

Climate Change

A total of 3,333 Victorians took part in the survey (Nov & Dec 16). The survey sample was carefully designed and controlled to provide results that can be projected to the broader population with confidence.

The survey estimates have a high level of statistical reliability. (At the 95% level of confidence, the margin of error associated with the sample of 3,300 is plus or minus 2.5%.)



www.take2.vic.gov.au

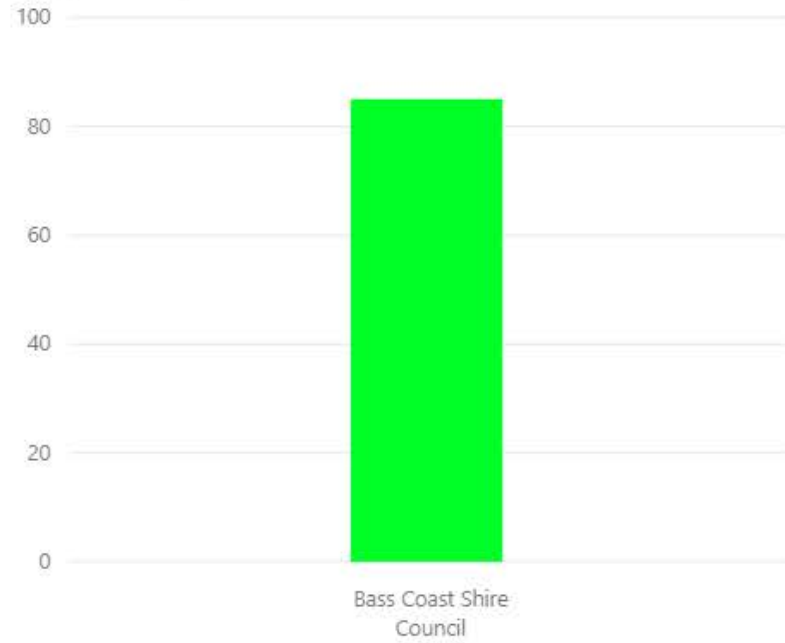
Working together, we pledge to play our part
and take action on climate change for Victoria,
our country and our planet



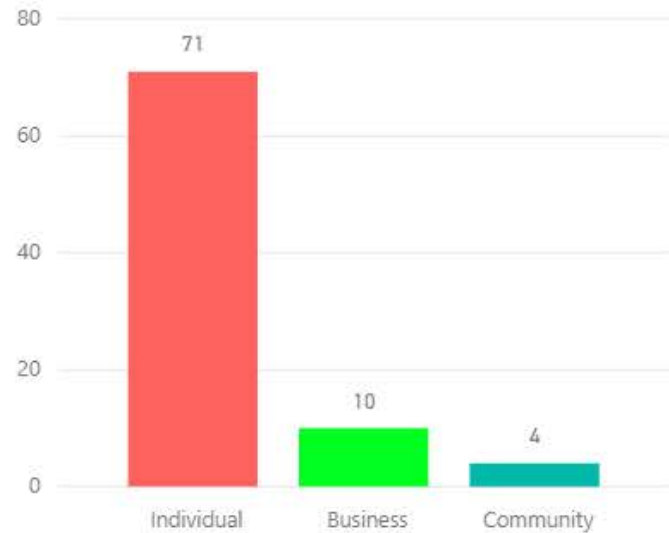
Press to pledge

TAKE2 in Bass Coast

Pledge Count by LGA



Pledge Count by Pledge_Type



Pledge Count by Postcode and Pledge_Type



Pledge Action Count by Action_Name



Phillip Island TAKE2 pledges

- 21 households and individuals
- Phillip Island Coastal Discovery Camp
- Phillip Island Nature Park
- Bimbadeen Angus Phillip Island
- Gippsland Natural



Bimbadeen Angus Phillip Island

www.bimbadeenphillipisland.com.au

Welcome to our TAKE2 profile page.

We're committed to tackling climate change. That's why we've made the TAKE2 pledge. Check out the work we've been doing to reduce our emissions and our plans for the future.

Make the TAKE2 pledge and join us in helping keep the temperature rise under two degrees.

Our pledge

As a farming family in the same location for over 60 years we are well aware of extreme weather events due to Climate Change. Bimbadeen has been sequestering Carbon into their soils over many years and are now a Carbon Positive property. In 2011 Bimbadeen was awarded 1st place in The National Carbon Cocky Awards for Outstanding Innovation or Invention. Thus the new Bimbadeen soil sequestration plan was implemented. Ongoing trials have shown an increase from 160 to 220 tonnes per hectare of Total Organic Carbon (TOC) in a selected trial paddock. Carbon sequestration monitoring is ongoing with all TOC measurements documented.

www.bullsemen.com.au site covers our cattle and Environmental footprint. It documents that we declared our "Carbon Positive" status on 10th July 2014 at Melbourne Park.



Heidi Hamm

Strategic Coordinator (Gippsland) | Regions,
Communities & Local Government
Sustainability Victoria

M: 0403 884 127 | **Ph:** 03 8626 8798

